

*Your Global Infrastructure Solutions Provider*

# COMPANY PROFILE

**Sky Networks Engineering Co., Ltd.**  
**c/o Zhejiang ZEC Imp & Exp Co., Ltd.**

Hangzhou, China



业主给我们一个 **机会**  
我们还业主一个 **辉煌**

BEING GIVEN A CHANCE  
WE SHALL BRING PROSPERITY TO OUR OWNER

**Sky Networks Engineering Co., Ltd.**  
**c/o Zhejiang ZEC Imp & Exp Co., Ltd.**

Add: ZEC Development Building, 258# Baishi Rd, Hangzhou China 310004

Tel/ Fax: +86 137 77498878

Email: sales@skyntwks.com, skyntwks@gmail.com

Http://www.skyntwks.com





# ***Brief Introduction***

- **About Us**
- **Organization Chart**
- **Our Honor**
- **Strong R&D Ability**
- **Manufacturing Capability**
- **Quality Assurance**
- **Logistics**
- **Engineering & Installation**
- **Marketing & Footprint**

# About us

**Sky Networks - A leading Telecommunication Infrastructure Solution provider for the Oil & Gas, Petrochemicals, Transportation and energy industries.**

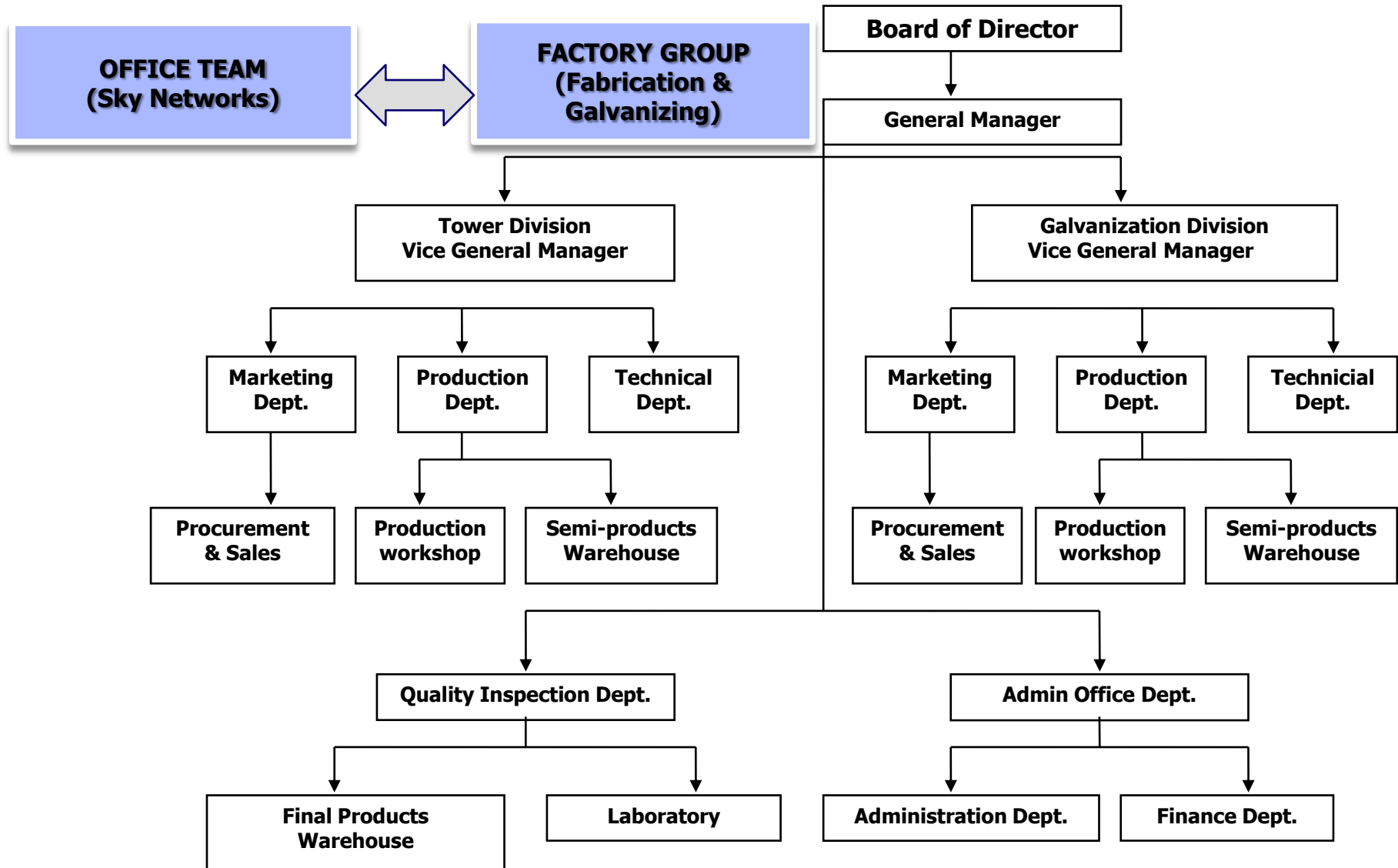
**Sky Networks - She owns a professional team of experienced engineers who have been absorbed in steel structure industry for more than 10 years. Engaged in telecommunication infrastructures products such as lattice tower & mast, poles, shelters, and relating.**

**And She has a cooperative partner for delicate steel structure fabrication but also hot-dip galvanizing service. Thus enables her can not only develop, design versatile products, but also a competitive solution provider, specializing in fast rollout turnkey packages and full e2e services, for deployment of steel structures and related project in the int'l market.**

**Sky Networks - Your global partner for supply of state-of-the art products. Influences today's dynamic world of steel infrastructure .**



# Organization Chart



# Our Honor – Cooperative Partner

We are committed to deliver...the best there is...to you!



**Commercial License**



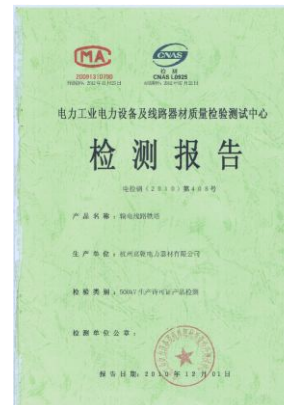
**Organization holding ID**



**Audited Annual Report  
Year 2011**  
(Click to read in PDF format)



**National Industrial  
Products Permission  
(500KV Lattice tower)**



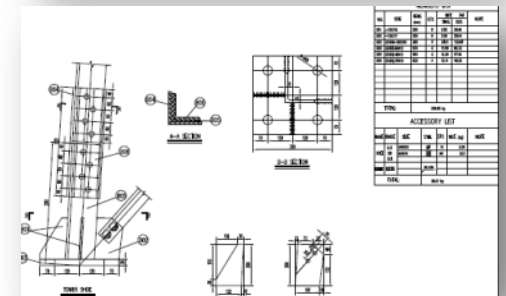
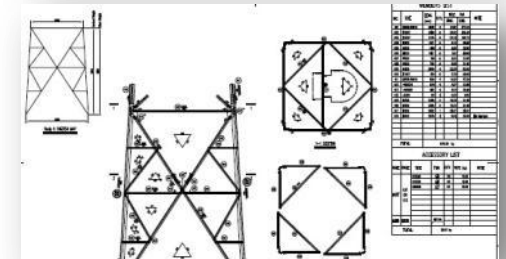
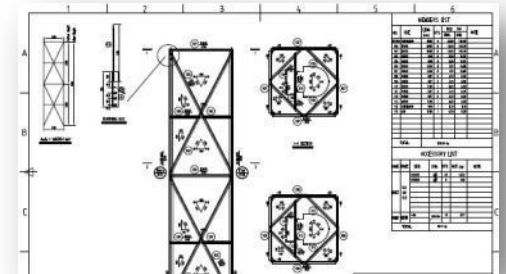
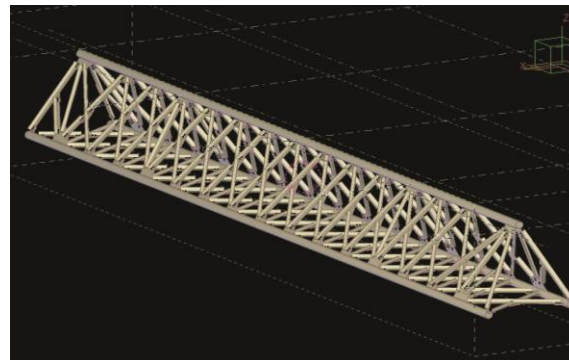
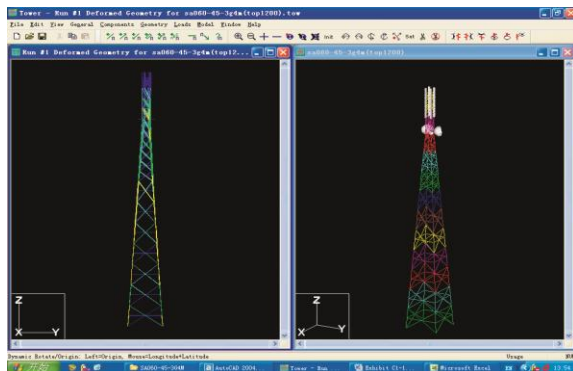
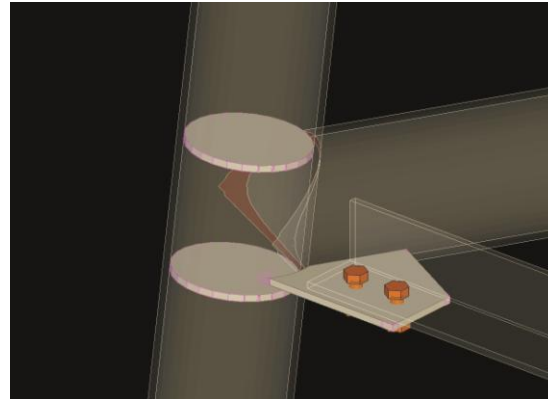
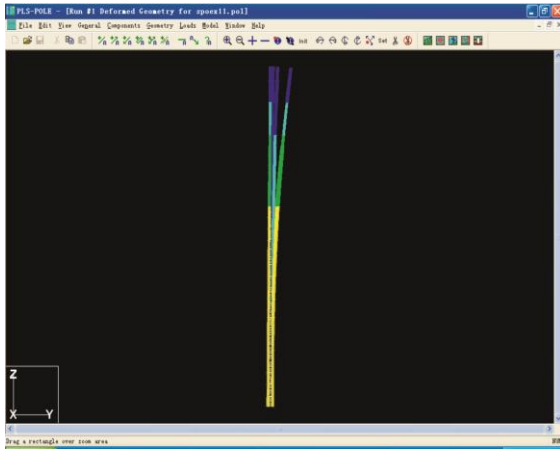
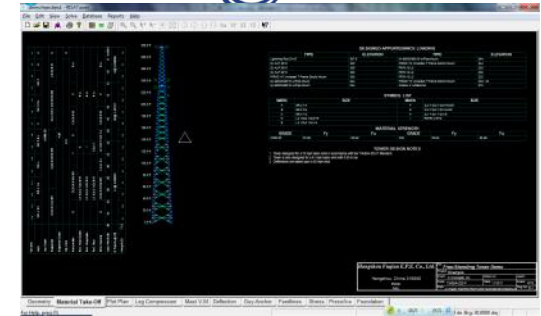
**Test Report By  
industrial authority**  
(Click to read in PDF format)



**Export License**

# Strong R&D Ability

With versatile design program and experienced skills, Sky Networks has been always engaged in developing products which continues to now, introducing unique and useful features to our products, which makes us more competitive in this industry.





# Manufacturing Capacity -Partner

Factory is located within Hangzhou area, about 2 hours driving from Shanghai and Ningbo sea port.

Total land area 60,000 sq m.

Advanced equipment such as:

- CNC cutting
- CNC Angle / Plate punching and stamping
- Angle cropping with Stamping
- Automatic production line for angle cutting, hole and number punching machines
- Notch cutting machines
- Vertical lathes, horizontal lathes
- Angle & Plate bending machines
- Radial drilling machines
- Arc welding & manual welding machines

**Production capacity:**

Lattice type: 2,000 tons/month,

Pole type: 1,000 tons/month.





# Quality Assurance

**Four Protective Shielding Layers**  
guarantee products service more than 50 years' life under rough conditions, such as coastal or oil & gas, petrochemical field, etc.

## Wind

Designed as per TIA-222 code, strictly considering local wind pressure.

## Corrosive environment

Hot dip-galvanized as per ASTM A 123/A 123M & painted(optional) surface, guaranteeing the tower/mast/pole can resist corrosion such as high humidity, high temperatures, dust & sand storms and possible traces of H<sub>2</sub>S

## Thunder

Supply w/ Lightning protection & grounding system to ensure the electrical safety.

## Snow

Designed considering the snow & ice surface loading.



4 Polyurethane surface painting



3 Epoxy primer coating



2 Hot dip-galvanization



1 Steel structure



# Logistics





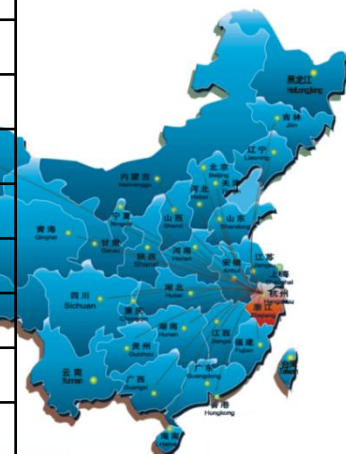
# Engineering & Installation



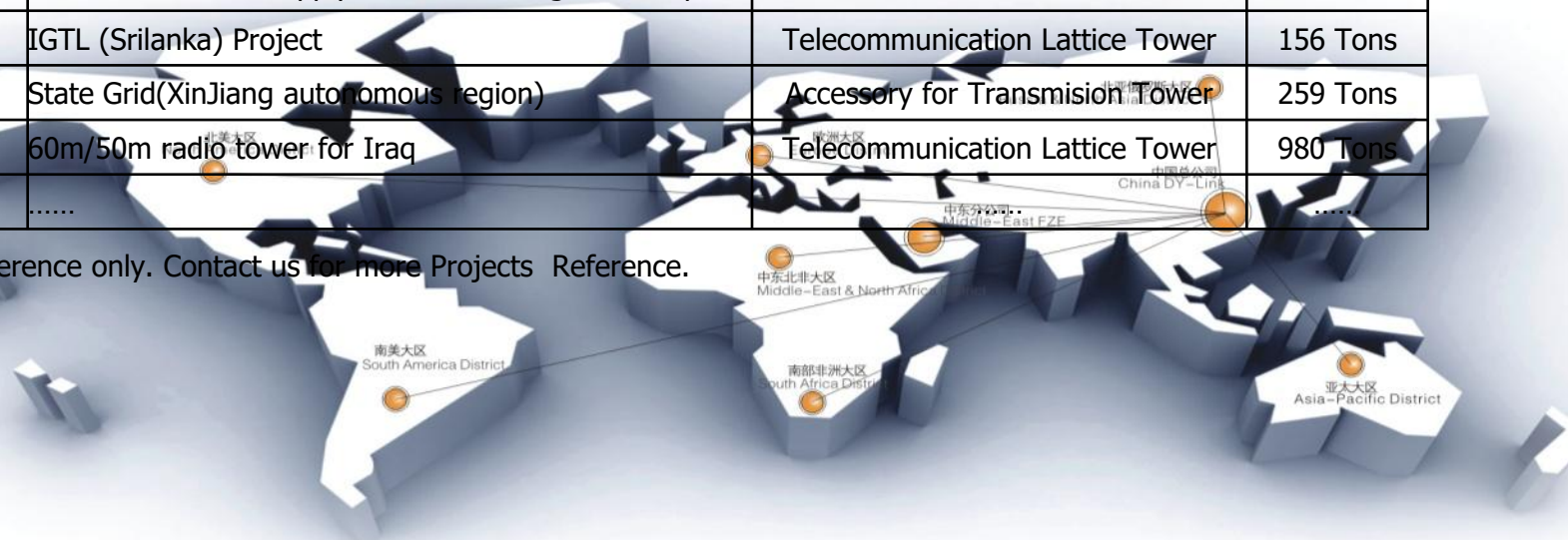


# Marketing & Footprint - Partner

| S/N | Date          | Project  | Products                         | Quantity |
|-----|---------------|--|----------------------------------|----------|
| 1   | May,2010      | Zhanwai Transmission line Project                  | 35kv Transmission Tower          | 198 Tons |
| 2   | June,2010     | Malaysia Project (No.905)                          | Substation Frame Structure       | 150 Tons |
| 3   | June,2010     | ZTE overseas Project (n/a)                         | Solar Mounting Structure         | 139 Tons |
| 4   | July,2010     | 70m radio tower for Iraq                           | Telecommunication Lattice Tower  | 217 Tons |
| 5   | August,2010   | State Grid(Shanxi Province)                        | 500kv Transmission Tower         | 335 Tons |
| 6   | October,2010  | Malaysia Project (No.101)                          | Substation Frame Structure       | 175 Tons |
| 7   | November,2010 | Electric Project for Myanmar                       | 110kv Transmission Tower         | 259 Tons |
| 8   | December,2010 | QianJiang Jinhuarun Project(Hubei Province)        | 110kv Transmission Tower         | 380 Tons |
| 9   | Februray,2011 | Substation Project for India                       | Substation Frame Structure       | 172 Tons |
| 10  | March,2011    | Overseas Project via Shanghai Trading              | Telecommunication Lattice Tower  | 235 Tons |
| 11  | March,2011    | Coal Mine Electric Supply for Shanxi Tongmei Group | 110kv Transmission Tower         | 497 Tons |
| 12  | March,2012    | IGTL (Srilanka) Project                            | Telecommunication Lattice Tower  | 156 Tons |
| 13  | April,2011    | State Grid(XinJiang autonomous region)             | Accessory for Transmission Tower | 259 Tons |
| 14  | May,2011      | 60m/50m radio tower for Iraq                       | Telecommunication Lattice Tower  | 980 Tons |
| ... | .....         | .....  | .....                            | .....    |



Note: Parts for reference only. Contact us for more Projects Reference.



# Thank You!

**We value your comment!**

Please contact us if any query.

**Sky Networks Engineering Co., Ltd.**

**c/o Zhejiang ZEC Imp & Exp Co., Ltd.**

Add: ZEC Development Building, 258# Baishi Rd, Hangzhou China 310004

Tel/ Fax: +86 137 77498878

Email: [sales@skyntwks.com](mailto:sales@skyntwks.com), [skyntwks@gmail.com](mailto:skyntwks@gmail.com)

[Http://www.skyntwks.com](http://www.skyntwks.com)