



FOR THE CHANGING WORLD OF TELECOM INFRASTRUCTURES

Products Introduction

Sky Networks Engineering Co., Ltd.

April, 2013

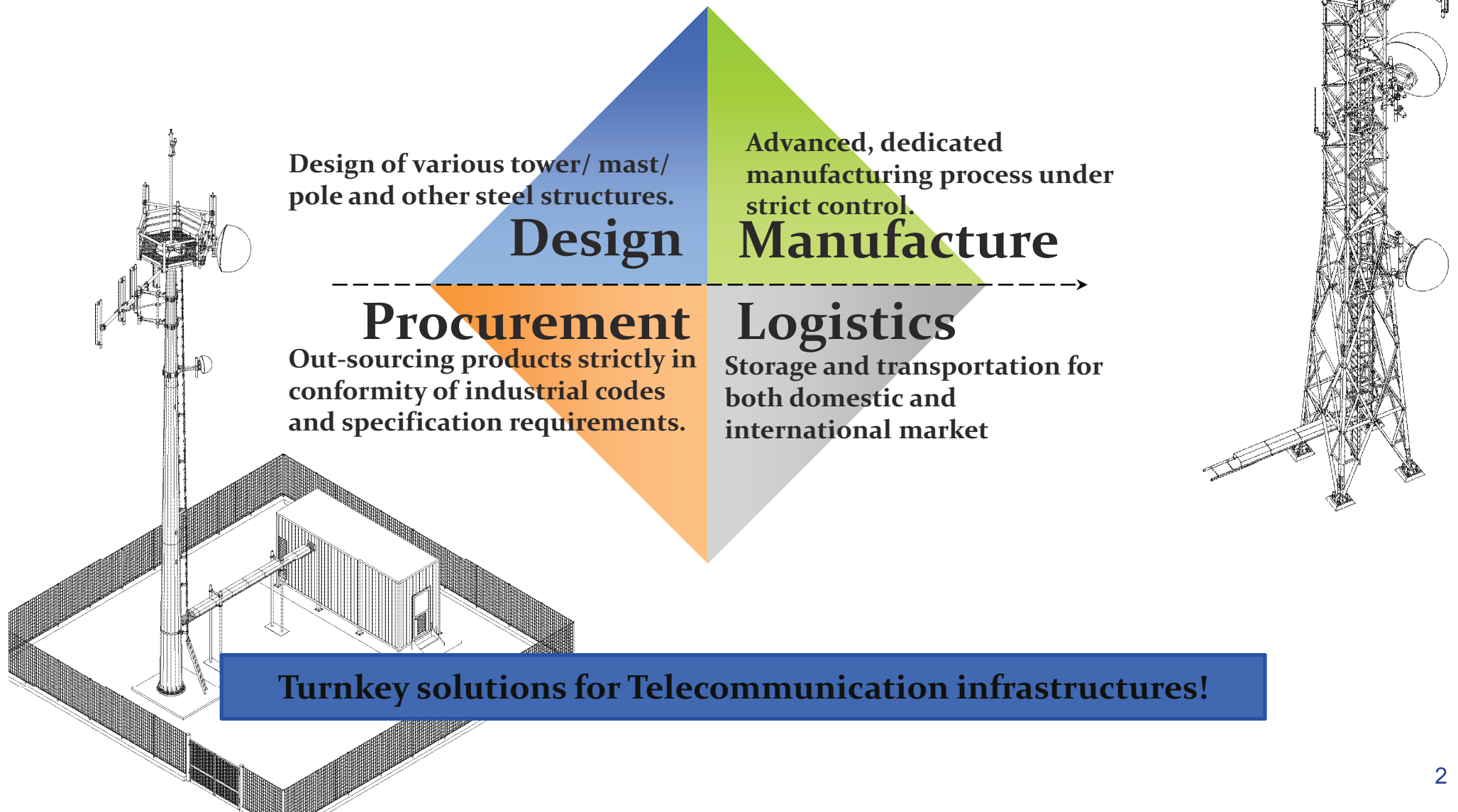
Hangzhou, China



sndylink

www.facebook.com/skyntwks

Products & Services



Lattice Tower



SKY NETWORKS' lattice tower provides the perfect low cost and good quality tower solution for start-up stations- Angular legs or Tubular legs, 3 legged or square one, which features:

- Cost-effective design solutions in accordance with latest ANSI/TIA-222 code;
- Designed to meet the RF requirements of telecom operators and vendors, as well as co-location load requirements of several operators;
- Optimized for container loading shipment and easy to erect,
- Excellent support service including site supervision and supplementary components;



Production Diagram



Lattice Tower - Design

➤ Sky Networks engineers are qualified and experienced in structural design. Having developed over 100 designs and complying to various industry standards and requirements.

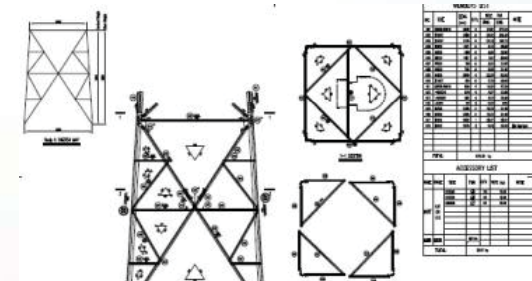
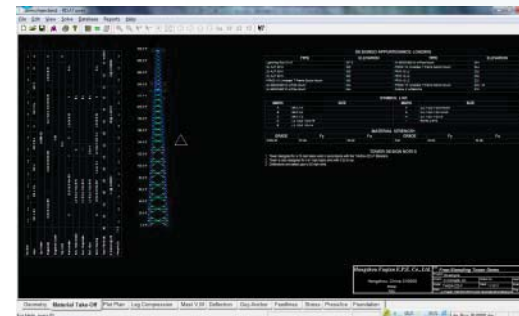
➤ Towers are designed using latest software based programs which takes into account various parameters, such as:

- ✓ Wind load conditions
- ✓ Antenna loading height & dimensions
- ✓ Feeder cable load conditions
- ✓ Ice load conditions
- ✓ Topography factor
- ✓ Dynamic effect of wind
- ✓ Factor of safety
- ✓ Codes / Standards requirements, and etc.

➤ Design software utilized:

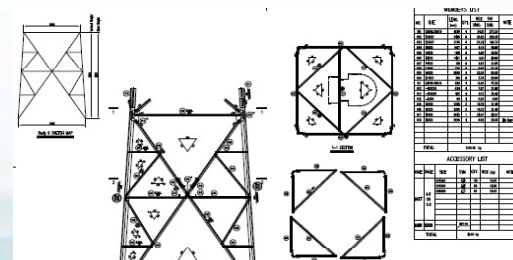
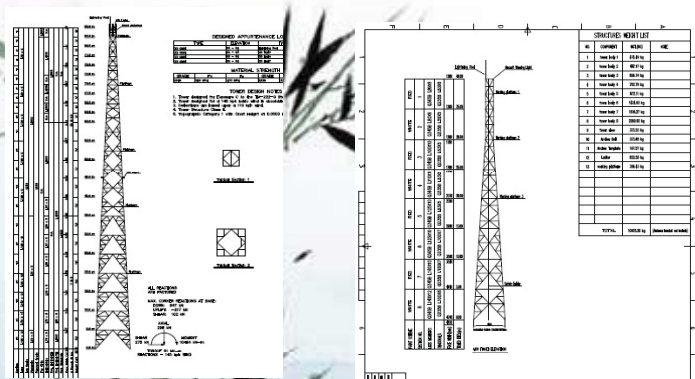
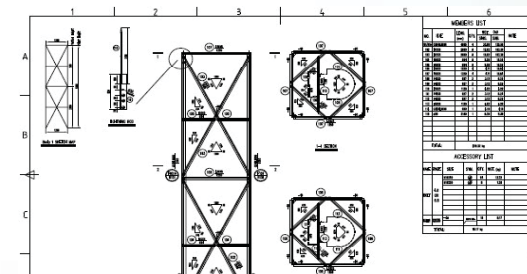
- ✓ Risa Tower & Risa3D
- ✓ PLS tower
- ✓ X-Steel

➤ Design standards mostly utilize EIA/TIA-222-G (Telecommunications industry association) for International approval



Lattice Tower - Detailing

- Generation Structure drawing for workshop drawing generation and site installation purpose.
- Generation of Bill Of Material (BOM)
- Workshop drawing for manufacturing based on Structure drawing & BOM.
- Software utilizing AutoCAD Ver 2004 or above
- Production Capacity – 2,000 MT/monthly
- Galvanization Capacity– 8,000 MT/monthly



Lattice Tower - Prototype Assembly and Inspection



- Dedicated independent prototype assembly units
- Prototype inspection done by internal QA Team. Third party or by Customers are also applicable for the final approval and for Mass production



Lattice Tower - Fabrication

1. Fabrication Capacity – 2,000 MT/month
2. Galvanization Capacity – 8,000 MT/month
3. Machines & Equipments for Lattice Towers
 - CNC cutting
 - CNC Angle punching and stamping
 - CNC Plate punching and stamping
 - Angle cropping with Stamping
 - Hydraulic press machines for angle cutting, hole and number punching machines
 - Notch cutting machines
 - Angle bending machines
 - Radial drilling machines
 - Welding machines
 - Etc.



Lattice Tower – Hot-dip Galvanization



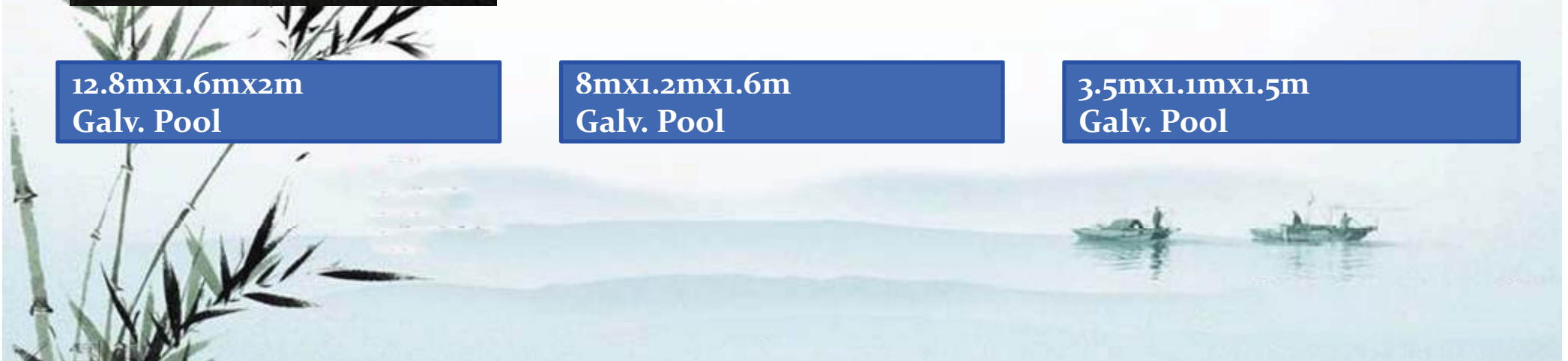
**12.8mx1.6mx2m
Galv. Pool**



**8mx1.2mx1.6m
Galv. Pool**



**3.5mx1.1mx1.5m
Galv. Pool**





skyntwks



www.facebook.com/skyntwks



PRODUCTS FOR THE CHANGING WORLD OF TELECOM INFRASTRUCTURES

Thank You!

Please visit our website for more products & solutions!

Sky Networks Engineering Co., Ltd.

Add: Jiangnan Dist, Hangzhou China 310000

Tel/ Fax: +86 571 60989773

Email: skyntwks@gmail.com

[Http://www.skyntwks.com](http://www.skyntwks.com)

April, 2013