



FOR THE CHANGING WORLD OF TELECOM INFRASTRUCTURES

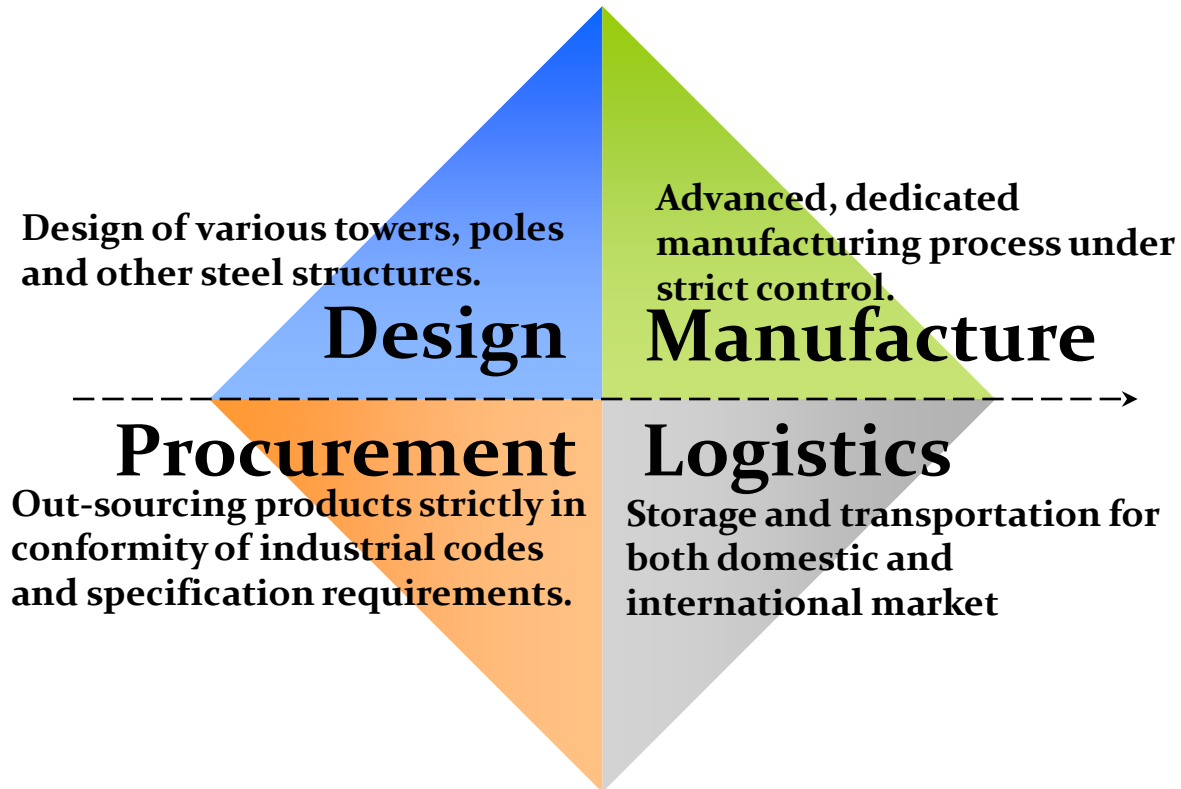
Products Introduction

Sky Networks Engineering Co., Ltd.
c/o Zhejiang ZEC Imp & Exp Co., Ltd.

November, 2011
Hangzhou, China



Products & Services



Turnkey solutions for Telecommunication infrastructures!



Products List



1. CCTV Mounting Structure



2. Lattice Tower (Angle Leg)



3. Monopole



4. Concealing Artificial Tree



5. Shelter/Cabin



6. Cabinet



7. Battery Group

CCTV Mounting Structure

Camera Poles / Towers are the most widely used and cost effective solution for mounting any camera in all scenarios.



Design

Structural design according to latest ILETR7, BS6399 and BS8100:

- Design wind speed : mean hourly wind speed 28.8 m/s
- Constant operational wind on entire height: 20m/s mean hourly
- Top deflection (operational wind speed): <0.1degree default



Material

Comply with the requirements of Chinese Standards:

- Structure parts GB 1591-2008 and ASTM G60 Q420
- Nuts and Bolts GB 3098.1.2 Grade 8.8
- Foundation bolt Grade 4.6 full galvanized



Manufacture

All materials are protected by hot-dip galvanizing in accordance to Chinese GB13912-2002 and ASTM A153/A153M

Welding as per code AWS1.1 and GB50205-2001, GB50017-2003

Paint finish of metallic structure upon requirement



Supply

Standard supply provides the minimum configuration required for structure commissioning

Foundation frame (Anchor bolts & templates)

Supporting structure, divided into shafts/sections

Climbing ladder with fall arrester system (Optional)

Packing list with assembly and maintenance instructions

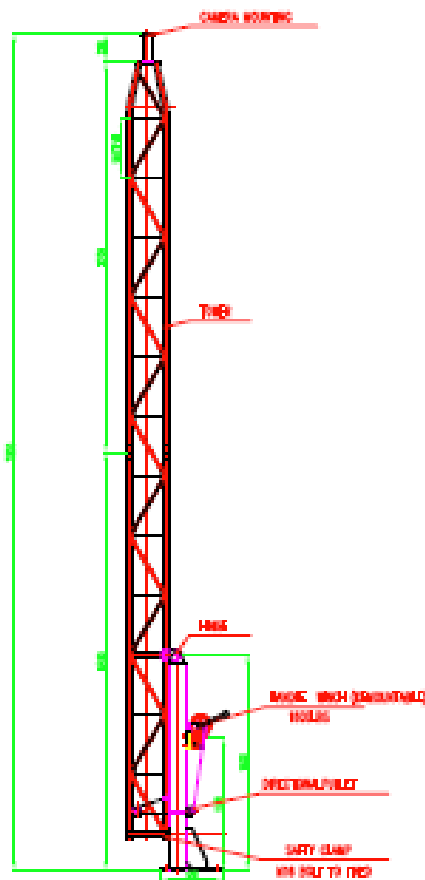


CCTV Mounting Tower – Static /Tilt-down

CCTV Camera towers (CMT) are a widely used and cost effective solution for camera mounting. Available in both static and tilt down models. Its low surface area makes it ideal for exposed locations such as deserts and coastal locations.

Features:

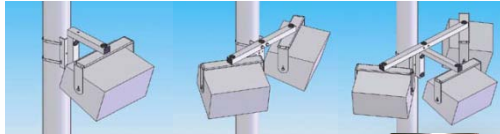
1. Cost effective solution of stable triangular structure achieving desired camera mounting height.
2. Modular construction for ease of transportation, assembly and erection on site;
3. Built in climbing rungs for equipment installation and maintenance.
4. Can be custom designed to fulfil project requirements or supplying tailored brackets/mounts for junction box, washer, telemetry receiver.
5. Tilt Down model: Demountable winches allow for a secure installation whilst also reducing costs on multiple installations; Tilting of tower can usually be simply carried out by single operator.
6. Constructed in high tensile steel and hot dip galvanized after fabrication for durability , especially for installation in saline/hostile environments;
7. This range accepts our appropriate accessories and mounting bracket, also suitable to mount loudspeakers;



CCTV Pole – Tubular Tilt-down Pole

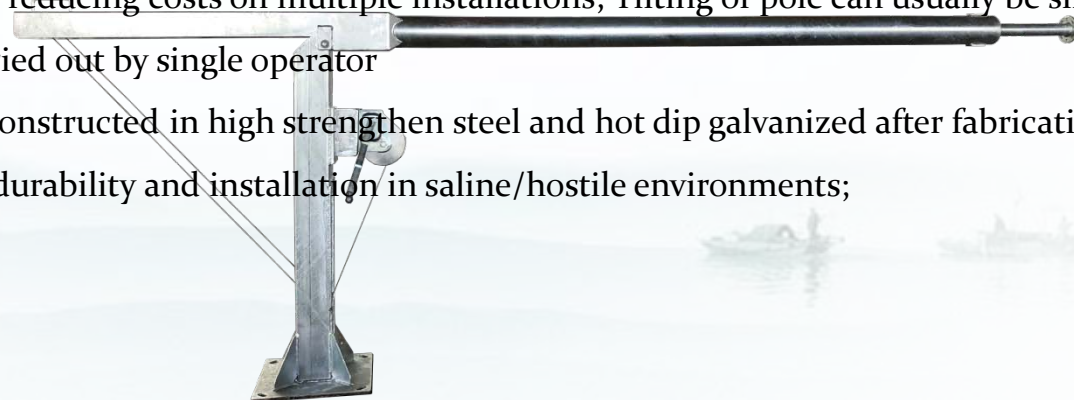


A complete range of tubular to cover all requirements for any CCTV system. These tubular poles unlike those used for lighting will provide stable mounting platforms to ensure a good quality stable picture.



Features:

1. Most cost-effective solution for gaining a desired camera mounting height. Standard PTZ fixing holes on 101.6PCD.
2. Serving as stable structures for all camera types ensuring minimal picture vibration;
3. Secure lockable service access door and plywood backboard as standard for inspection/junction apertures.
4. Suitable for public access areas;
5. Accepts appropriate SNE accessories and bracketry, such as anti climb collar.
6. Tilt Down model: Demountable winches allow for a secure installation whilst also reducing costs on multiple installations; Tilting of pole can usually be simply carried out by single operator
7. Constructed in high strength steel and hot dip galvanized after fabrication for durability and installation in saline/hostile environments;



CCTV Pole – Cabinet Based Pole



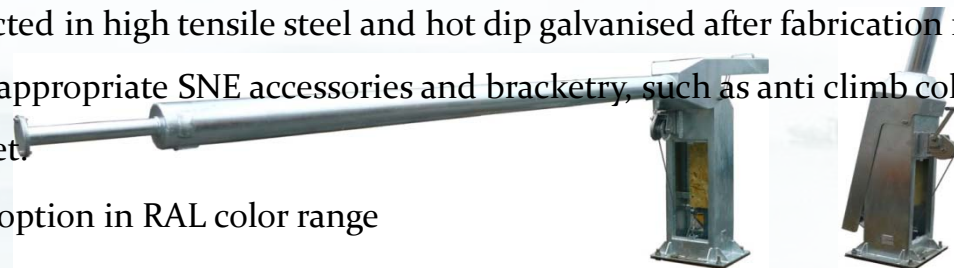
SKY NETWORKS

Cabinet Based Pole is a tubular tilt-down pole with cabinet room, providing a rigid, secure camera mount at cost effective price while also providing safe servicing conditions at ground level. A luxury model for Tilt-down pole.



Features:

- ◆ 1. Stable structure for all camera types ensuring minimal picture vibration;
2. Standard cabinet sizes 400mm, and can be manufactured as per specified;
3. Flush fitting door level with cabinet surface giving enhanced security;
4. Secure lockable service access door and plywood backboard as standard for inspection/junction apertures.
5. Fitted vents allowing full convection system eliminating condensation;
5. Can be used in any location from Town Centre to Industrial/Commercial locations using relevant options.
6. Tilt Down model: Demountable winches allow for a secure installation whilst also reducing costs on multiple installations; Tilting of pole can usually be simply carried out by single operator;
7. Constructed in high tensile steel and hot dip galvanised after fabrication for durability
8. Accepts appropriate SNE accessories and bracketry, such as anti climb collar, side-of-pole bracket.
9. Paint as option in RAL color range



Wall Mounted Poles

Ideal for gaining an elevated viewpoint from existing structures



Please contact us for custom design.