



FOR THE CHANGING WORLD OF TELECOM INFRASTRUCTURES

Products Introduction

Sky Networks Engineering Co., Ltd.

April, 2013

Hangzhou, China



sndylink



www.facebook.com/skyntwks

Products & Services

Design of various tower/ mast/
pole and other steel structures.

Design

Advanced, dedicated
manufacturing process under
strict control.

Manufacture

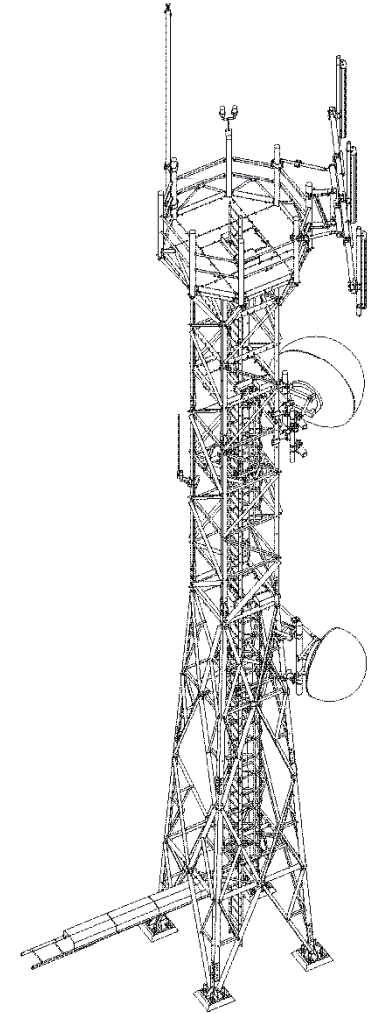
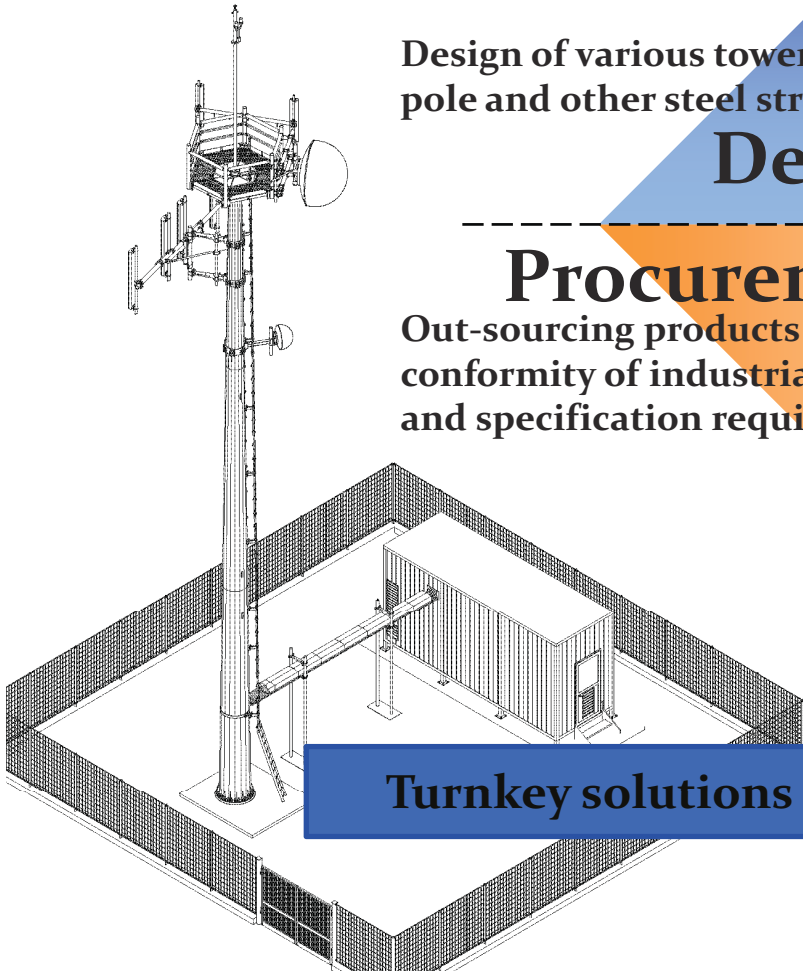
Procurement

Out-sourcing products strictly in
conformity of industrial codes
and specification requirements.

Logistics

Storage and transportation for
both domestic and
international market

Turnkey solutions for Telecommunication infrastructures!



Concealing Artificial Tree Monopole

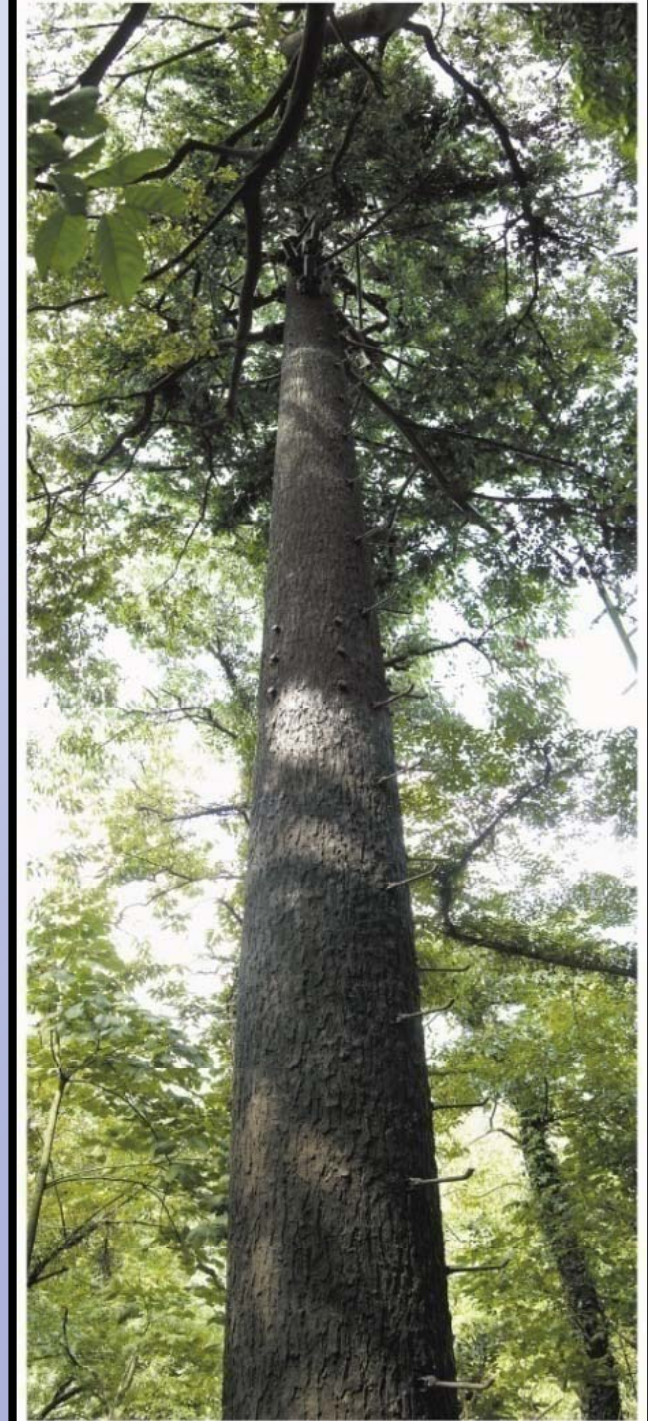
Are you running out of suggestions?

Is the landlord not easily persuaded to allow installation of your equipment on his property?

Or are the authorities not giving the permissions because of V.I.P. area considerations and restrictions?

SKY NETWORKS suggest that you look at alternative solutions that creates new possibilities, speeds up the progress and ensures that all parties are satisfied –and you do not even have to compromise your RF-plan!

A consolidated experience of over ten year and worldwide patents, is Sky Networks' credentials with regards quality and durability of these concealing antennas, even in extreme climates.



Concealing Artificial Tree Monopole



The trunk consists of a steel pole divided into several shafts, according to the overall height of the structure that can vary from 20 to 40 meters. The external surface of the trunk is lined by plastic material that is resistant to UVA rays and atmospheric agents, with an aspect that in time maintains the resemblance of natural bark.

The foliage is comprised of branches made of plastic material accurately designed, taking into consideration quantity, shape and array suitable to completely conceal the antennas and all accessory parts in a natural manner. The materials used, in addition to guaranteeing radio-electric transparency and resistance to UVA rays, over the time keep their proper mechanical and color characteristics

Design



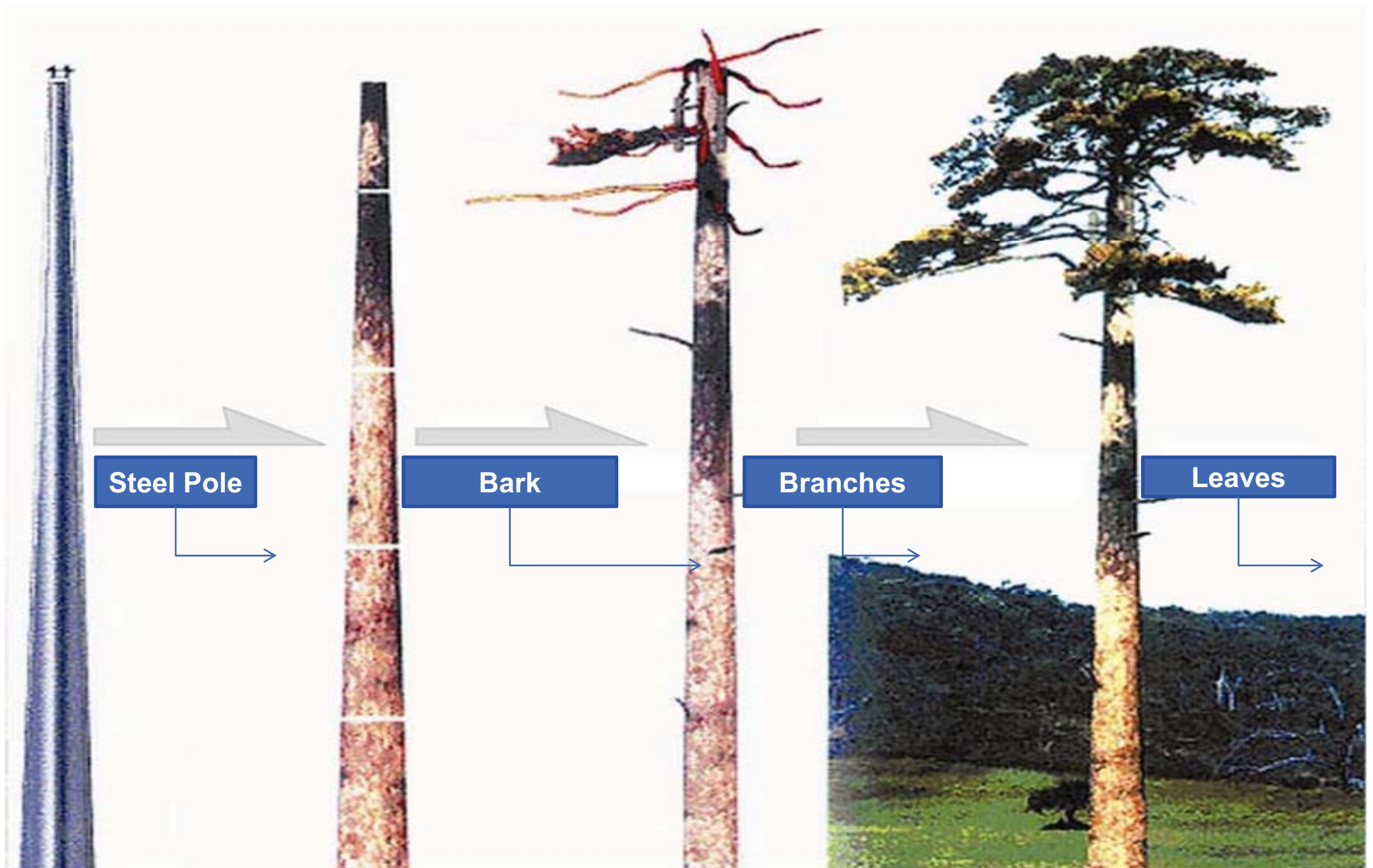
- Structural steel design according to the most recent TIA/EIA-222-G.
- Design wind speed (EIA-222-G) 45m/s
- Constant operational wind speed on entire height 35m/s
- Top deflection (operational wind speed) <1 degree

Material



- The Materials comply with the requirements of Chinese Standards
- Structure parts Q345 GB 1591-2008
- Nuts and Bolts G8.8 GB 3098.1.2
- Artificial Bark Reinforced Plastic
- Branches Fiberglass reinforced plastic
- Leaves Plastic materials with supporting core in glass rowing and resin
- All materials are protected by hot-dip galvanizing in accordance to Chinese GB13912-2002 and ASTM123





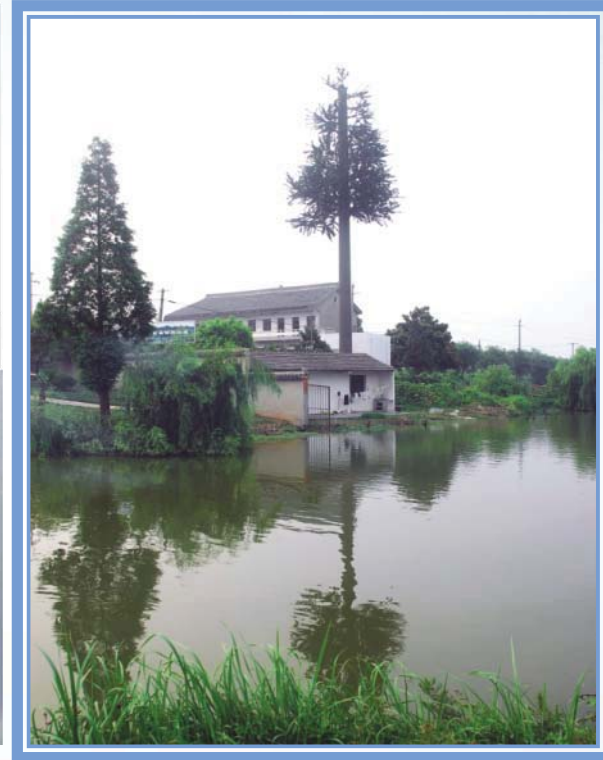
Conception Diagram of Tree pole production

Concealing Artificial Tree



Palm Tree

Pine Tree





skyntwks



www.facebook.com/skyntwks



PRODUCTS FOR THE CHANGING WORLD OF TELECOM INFRASTRUCTURES

Thank You!

Please visit our website for more products & solutions!

Sky Networks Engineering Co., Ltd.

Add: Jiangnan Dist, Hangzhou China 310000

Tel/ Fax: +86 571 60989773

Email: skyntwks@gmail.com

[Http://www.skyntwks.com](http://www.skyntwks.com)

April, 2013

